

## RADCARE Mission Statement

Our mission is to enhance the independence of our clients by providing a coordinated, flexible, responsive, timely and individualized package of services to enable them to remain living at home, in the community, safely and happily, as an alternative to residential care.

## Cost

Overnight	\$75.00
Full day only	\$50.00
Morning or afternoon only	\$25.00
Weekly (Monday-Friday)	\$300.00

(Prices as at 19/3/2018)

For Financial Assistance Commonwealth Respite and Carelink Service may be able to help.

**Ph: 1800 052 222**

## Contacts



## CEDAR PARK COTTAGE

Sponsored by

## RADCARE Support Services

14 Moore St Ravenshoe Q 4888

PO Box 672 Ravenshoe Q 4888

**Phone:** 07 4097 7263

**Fax:** 07 4097 6274

**Website:** [www.radcare.com.au](http://www.radcare.com.au)

**Email:** [wecare@radcare.com.au](mailto:wecare@radcare.com.au)  
[deb@radcare.com.au](mailto:deb@radcare.com.au)

# Are you a Carer and need a break?

Contact us at

**wecare @radcare.com.au**

ABN 79 115 909 900



*We Provide a Safe, Non-threatening and  
Discrimination Free Environment Where You  
Can Truly Be Yourself*

## CEDAR PARK COTTAGE

*An alternative to Residential Care  
for  
Overnight or Daily stays*

## RADCARE Support Services

RADCARE is a not-for-profit organization who have provided services since 1996 for elderly people who wish to remain living at home.

Our staff are highly trained, ensuring we provide an open and inclusive rapport with clients, whilst providing quality care.

RADCARE Support Services is an approved provider by the Aged Care Quality Agency.

## Who is Eligible?

Priority is given to carer's of aged people and carer's of people suffering from dementia.

## How Do I Book?

You can book directly with RADCARE Support Services or contact Commonwealth Respite and Carelink to apply for financial assistance by calling:

**Commonwealth Respite & Carelink**  
**PH: 1800 052 222**

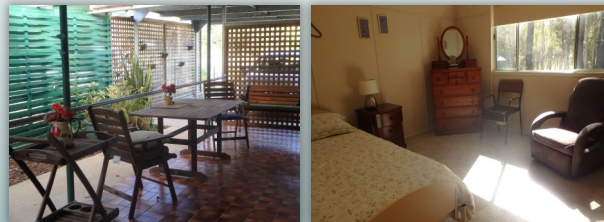
## Cedar Park Respite Cottage

We provide experienced staff to cover 24 hour care, in a friendly, caring and homelike setting. The cottage is situated in a quiet street in Cedar Park, a suburb of Ravenshoe. It has 3 bedrooms, a wheelchair accessible bathroom, lounge, large kitchen/dining room and a veranda.

Home cooked meals are provided and cooked on the premises, with guest's dietary needs and preferences catered for.

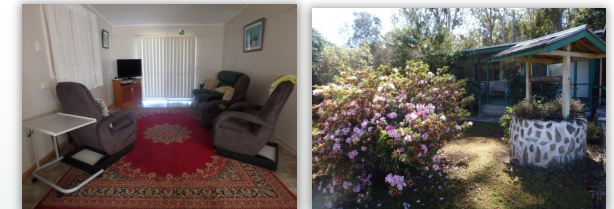
Outings and activities are arranged with the input of the clients. They may be taken out for a coffee or lunch, a drive, a BBQ, or a social outing depending on what is happening in the community.

Transport can be arranged for pick up and return home from staying at the cottage.



## What Services Can We Offer?

- **Daily Care or Overnight**
- **Booked or Emergency**
- **Culturally sensitive care**
- **Respite for the Carer**
- **Care for the Client**
- **Qualified staff**
- **Homely Environment**
- **Wheelchair Access**
- **Social & Community Access**



*If you think our service can help you or someone you know, or you would like more information regarding Referrals or Home Care Packages please contact:*

**RADCARE Support Services**  
**Ph: 07 4097 7263**